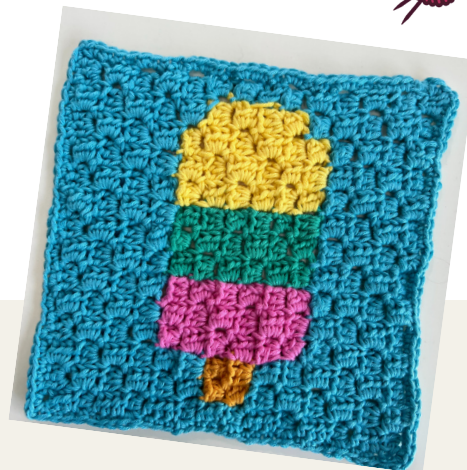


# GRANNY SQUARE MONTH

knit  craft  
by hobbycraft



## Day 24

Instagram [@offthehookforyou](https://www.instagram.com/offthehookforyou)

### Abbreviations (UK terms)

ch - Chain

DC - double crochet

Htr - Half Treble Crochet

Sl St - Slip Stitch

Sp - space

### What you will need:

- Knitcraft Cotton Blend in Bright Blue (yarn A), Mustard (Yarn B), Hot Pink (Yarn C), Teal (Yarn D), Yellow (Yarn E)
- 5mm crochet hook
- Tapestry needle
- Scissors

### Pattern Notes

Tension: 8 x 8 block square = 10cm square over st patt (1 block = 3ch and 3Htr)

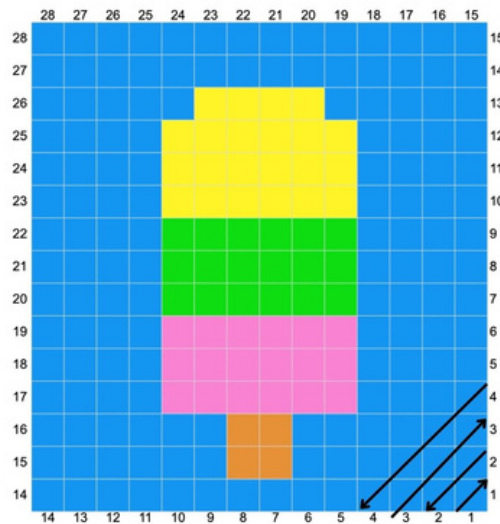
Block: 3 ch and 3 Htr in indicated st or sp.



Corner to Corner is made by making "blocks". Each block is made up of a Ch2, and 3 HTr.  
When following the chart, you'll be working diagonally from the bottom right corner to the top left corner - not in rows.

Starting at the bottom right corner, work row 1 (1 block). Turn then work 2 blocks (row 2), Turn, 3 blocks (row 3) etc.

### How to read the C2C chart



You can follow the chart of the block colours below.

You'll need 2 bobbins/ balls of yarn A, and a length of about 70 cm for 3 squares if you don't want to carry the yarn.

To change colour, you need to make the Slip Stitch into the new block with the new colour, then make the block as normal, Ch 2, 3htr.





With Yarn A, ch 5

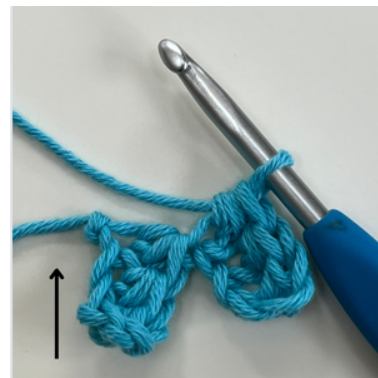


**Increase rows**

Row 1. In the 3rd chain from the hook, make 1 htr, 1 htr in each of the next 2 ch, (This is one block made),



Row 2. Ch5, in 3rd chain from the hook, make 1 htr, 1 htr in each of the next 2 ch. (Block made) you now need to "flip/ turn the left hand block, ss into the ch2 sp, ch2, 3 htr in the ch2 sp, (Block 2 made).





Row 3. Ch 5, in 3rd ch from the hook, make 1 htr, 1 htr in each of the next 2 chains (Block 1 made), flip or turn, ss into the ch2 sp, ch2, 3 htr (Block 2 made), ss into the ch2 sp, ch2, 3 htr (Block 3 made).



Rows 4 to 13. Rep row 3 following the chart

Row 14: Chain 5, In the 3rd chain from the hook, make 1 htr, and 1 htr in each of the next 2 chains (Block 1 made). Turn, sl st into the ch2 space, ch2, 3htr (Block2 made), Continue until block 14 made.





### Decrease rows

Row 15: Chain 5, In the 3rd chain from the hook, make 1 htr, and 1 htr in each of the next 2 chains (Block 1 made). Turn, Sl St into the ch2 space, ch2, 3 htr (Block 2 made), Continue until block 14 made, sl st into last ch2 sp,

Row 16: Ch 2, turn, miss 1st block, ss into ch2 sp, ch2, 3 htr (Block 1 made), Continue until block 13 made, sl st into last ch2 sp,

Cont decreasing 1 block on each row as per the chart or the block colours below, until the final block is made and the square is complete, ss over to the top left corner of the square. Fasten off, weave in ends.

### Border

Finish the square by making a border of dc around the edge of the square.

Join yarn A, ch 1, dc along the edge, making 2 dc in the ch2 sps, 1 dc in the top of each stitch 1 chain in the corners.

Block to size

