

GRANNY SQUARE MONTH

knit  craft
by hobbycraft



Day 5

Instagram [@cutecrochetmakes](https://www.instagram.com/cutecrochetmakes)

Abbreviations (UK terms)

St(s) – stitch(es)
Ss – slip stitch
Rep - repeat
Dc – double crochet
Tr – treble crochet
Htr – half treble crochet
XHTR – crossed half treble
crochet
MR – magic ring
Spike st – Spike stitch
Yo - yarn over

What you will need:

- Knitcraft Cotton Blend in Bright Blue (yarn A), Hot Pink (Yarn B), Mustard (yarn C), Yellow (yarn D), Red (yarn E), Denim (yarn F)
- Small amount of Light Blue and Purple for sprinkles
- 5mm crochet hook
- Tapestry needle
- Scissors

Pattern Notes

Bobble ST – (5TR together). * YO insert hook into stitch, YO and pull through. YO and pull through first two stitches on hook (2 hoops remaining on hook). Rep from * 4 more times in the same stitch (6 loops on hook). YO and pull through all 6 loops.

Dc2tog – double crochet decrease. Insert hook into st, YO and pull through (2 loops on hook). Insert hook into next st, YO and pull through (3 loops on hook). YO and pull through all 3 loops.

CH1 and Turn at the end of each row. CH1 does not count as a ST throughout.

Row 1 measures approx 16cm. If your 1st row is a lot longer you may want to use the next hook size down.



Colour Changes – change colour in the st before you start the new colour. Insert hook and Yo (2 loops on hook) then Yo in the new colour. Always keep tail ends on the WRONG side of your work. Carry colours across the back to avoid having lots of ends to sew in.



Using A, ch34

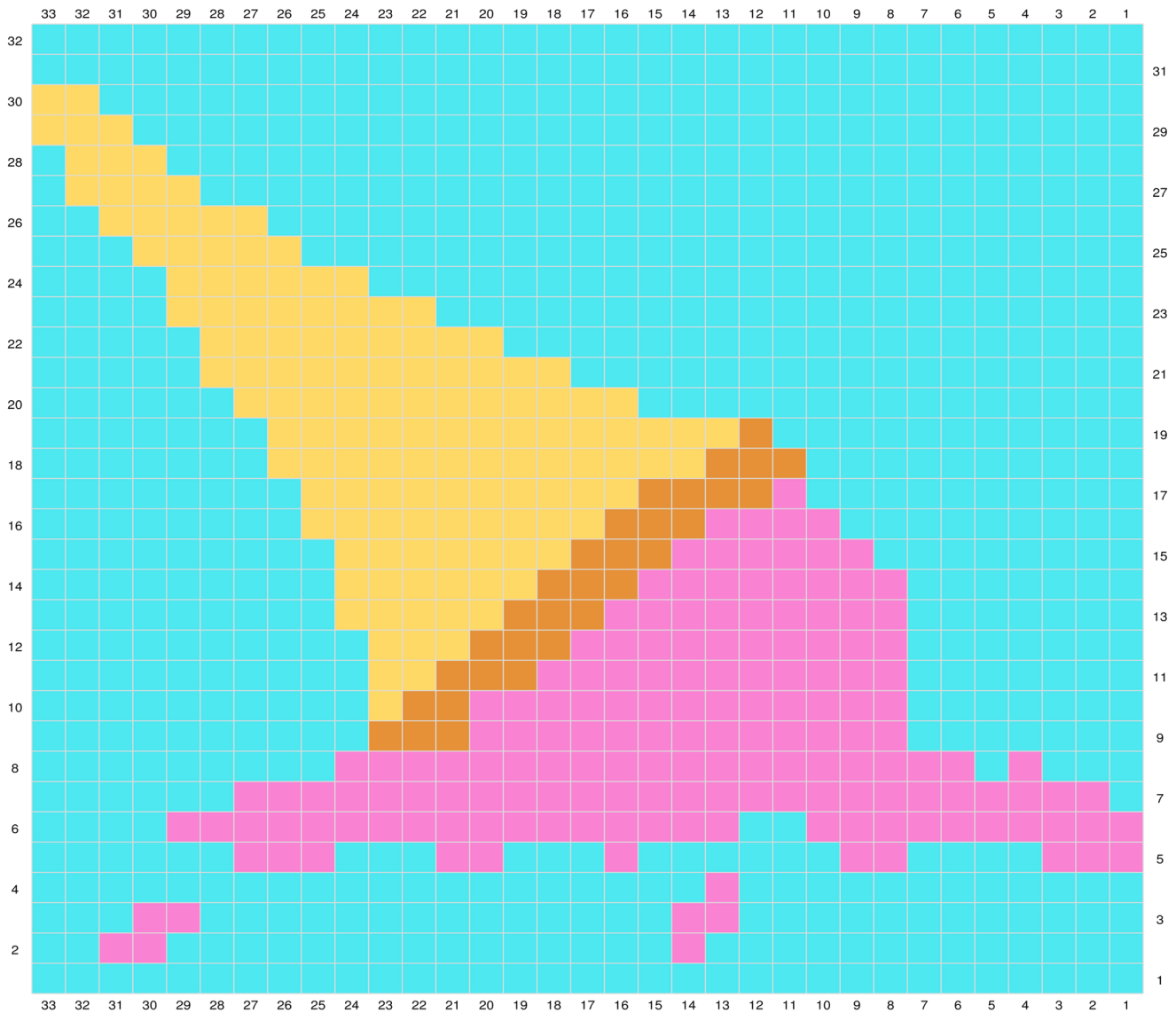
Work from chart or written instructions as follows:

- Row 1: Working into 2nd ch from hook, with A 33 dc. Turn. 33 sts.
Row 2: With A, 1 ch, 2 dc, with B 2 dc, A 15 dc, B 1 dc, A 13 dc. Turn.
Row 3: With A, 1 ch, 12 dc, with B 2 dc, A 14 dc, B 2 dc, A 3 dc. Turn.
Row 4: With A, 1 ch, 20 dc, with B 1 dc, A 12 dc. Turn.
Row 5: With B, 1 ch, 3 dc, with A 4 dc, B 2 dc, A 6 dc, B 1 dc, A 3 dc, B 2 dc, A 3 dc, B 3dc, A 6dc. Turn.
Row 6: With A, 1 ch, 4 dc, with B 17 dc, A 2 dc, B 10 dc. Turn.
Row 7: With A, 1 ch, 1 dc, with B 26 dc, A 6 dc. Turn.
Row 8: With A, 1 ch, 9 dc, with B 19 dc, A 1 dc, B 1 dc, A 3 dc. Turn.
Row 9: With A, 1 ch, 7 dc, with B13, with C 3 dc, A 10 dc. Turn.
Row 10: With A, 1 ch, 10 dc, with D 1 dc, with C 2 dc, with B 13 dc, A 7 dc. Turn.
Row 11: With A, 1 ch, 7 dc, with B 11 dc, with C 3 dc, with D 2 dc, A 10 dc. Turn.
Row 12: With A, 1 ch, 10 dc, with D 3 dc, with C 3 dc, B 10 dc, A 7 dc. Turn.
Row 13: With A, 1 ch, 7 dc, with B 9 dc, with C 3 dc, with D 5 dc, A 9 dc. Turn.
Row 14: With A, 1 ch, 9 dc, with D 6 dc, with C 3 dc, B 8 dc, A 7 dc. Turn.
Row 15: With A, 1 ch, 8 dc, with B 6 dc, with C 3 dc, with D 7 dc, A 9 dc. Turn.
Row 16: With A, 1 ch, 8 dc, with D 9 dc, with C 3 dc, with B 4 dc, A 9 dc. Turn.
Row 17: With A, 1 ch, 10 dc, with B 1 dc, with C 4 dc, with D 10 dc, A 8 dc. Turn.
Row 18: With A, 1 ch, 7 dc, with D 13 dc, with C 3 dc, A 10 dc. Turn.
Row 19: With A, 1 ch, 11 dc, with C 1 dc, with D 14 dc, A 7 dc. Turn.
Row 20: With A, 1 ch, 6 dc, with D 12 dc, A 15 dc. Turn.
Row 21: With A, 1 ch, 17 dc, with D 11 dc, A 5 dc. Turn.
Row 22: With A, 1 ch, 5 dc, with D 9 dc, A 19 dc. Turn.
Row 23: With A, 1 ch, 21 dc, with D 8 dc, A 4 dc. Turn.
Row 24: With A, 1 ch, 4 dc, with D 6 dc, A 23 dc. Turn.
Row 25: With A, 1 ch, 25 dc, with D 5 dc, A 3 dc. Turn.
Row 26: With A, 1 ch, 2 dc, with D 5 dc, A 26 dc. Turn.





Row 27: With A, 1 ch, 28 dc, with D 4 dc, A 1 dc. Turn.
 Row 28: With A, 1 ch, 1 dc, with D 3 dc, A 29 dc. Turn.
 Row 29: With A, 1 ch, 30 dc, with D 3 dc. Turn.
 Row 30: With D, 1 ch, 2 dc, with A 31 dc. Turn.
 Row 31: With A, 1 ch, 33 dc. Turn.
 Row 32: With A, 1 ch, 33 dc. Turn.
 Fasten off, weave in ends and block.



-  Yellow
-  Pink
-  Bright Blue
-  Mustard

Each square represents the number of DC stitches to be made in that colour.

Find us at [@knitcraftuk](https://www.instagram.com/knitcraftuk)   

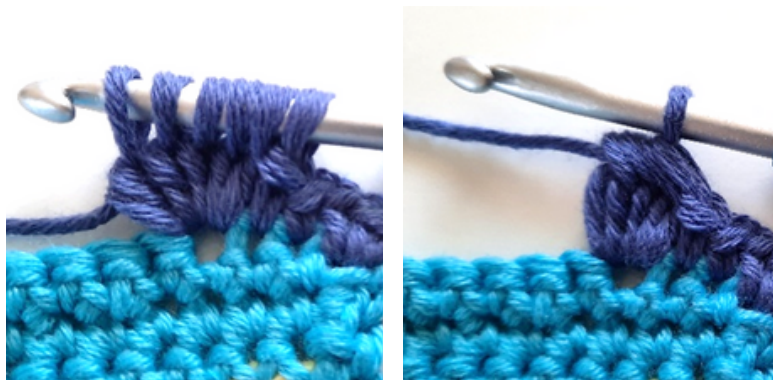




Border

Rnd 1 Continue using yarn A, turn work (RS). Work 1dc in each st across. In the last st (1dc, ch2, 1dc), working down the side of the square make 1dc in each st with (1dc, ch2, 1dc) in the last st, work 1dc in each st across the bottom of the square with (1dc, ch2, 1dc) in the last st and finally work 1dc in each st up the side of the square finishing with a (1dc, ch2) in the last st, ss in the 1st dc made to join. Fasten off yarn. (Each side has 33sts with CH2 in each corner).

Rnd 2 With the WRONG SIDE facing join yarn F in any ch2 corner space. (1dc, ch1, 1dc). * dc in the next 2sts. Bobble in next st. (dc in the next 3sts, Bobble in next st) 7 times, 1dc in next 2sts. (1dc, ch1, 1dc) in the corner ch-2-sp, rep from * twice more, dc in the next 2sts, Bobble in next st. (dc in the next 3sts, Bobble in next st) 7 times, 1dc in next 2sts, ss in the 1st dc made to join. Fasten off yarn. (Each side has 8 bobbles, 35sts in total with CH1 in each corner)



Rnd 3 With the RIGHT SIDE facing join RED (E) in any ch-1-sp. (1htr, ch1, 1htr). * Make a long HTR in the next st – so it goes into the yarn A row 1 of the border (this creates Spike st). (skip next st and bobble st, htr in next st, then work htr in the first st skipped. (The one before the bobble – this creates a XHTR), spike st in centre st between the bobbles) 8 times, (1htr, ch1, 1htr) in the corner ch-1-sp,* rep from * to * twice more, spike st, (skip next st and bobble st, XHTR, spike st in centre st between the bobbles) 8 times, ss in the top of the 1st 1htr. Fasten off yarn. (Each side has 27sts with ch1 in each corner).





Rnd 4 With the RIGHT SIDE facing join yarn D in any ch-1-sp corner, (1dc, ch1, 1dc) in ch-1-sp, 1dc in each st to corner ch-1-sp, working (1dc, ch1, 1dc) in each corner ch-1-sp, ss in the 1st dc to join. Fasten off yarn. (Each side has 29sts with CH1 in each corner).



Cherry

Rnd 1 Using RED in a MR make 4dc, ss in the 1st dc made to join. (4sts).

Rnd 2 Ch1 – (does not count as st throughout), (2dc in each st) 4 times, ss in 1st dc to join. (8sts).

Rnd 3 Ch1, (2dc in next st, 1dc) 4 times, ss in 1st dc to join. (12sts).

Rnd 4 Ch1, (dc2tog, dc) 4 times, ss in 1st dc2tog to join. (8sts).

Rnd 5 Ch1, (dc2tog) 4 times, ss in 1st dc2tog to join. Fasten off yarn leaving a long tail to sew onto square. (4sts).

Using the long tail close the hole. Sew cherry onto square as in main photo, sewing through the edges of the cherry. Pull yarn through the side of the cherry for the stalk. Make a knot about 1cm up and sew through the square to hold it in place.





Ice-cream

Cone details - Cut a long length of yarn C. Sew 7 lines vertically over the cone. Then sew 7 lines horizontally crossing over the previous ones.

Using small length of Light Blue, Purple and Yellow, sew small dashes over the ice cream for the sprinkles.

