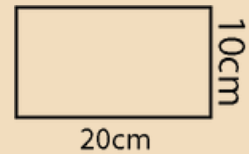


Part 3



Sheep Patch Small

This patch uses the tapestry crochet method.
Make 3 the same using Pink/Grey/White



Tension

13 sts x 15 rows worked in dc to measure 10cmx10cm using 6mm crochet hook, or hook required to meet stated tension. This patch should measure 20cmx10cm.

Using 6mm hook and Pink, ch 24.

Row 1 (RS)

1dc in second ch from hook (skipped 1ch does not count as a st), 1dc in each st across, turn. [23 dc]

Continue to follow the tapestry crochet chart for a single sheep to Row 13, joining in new colours where necessary.

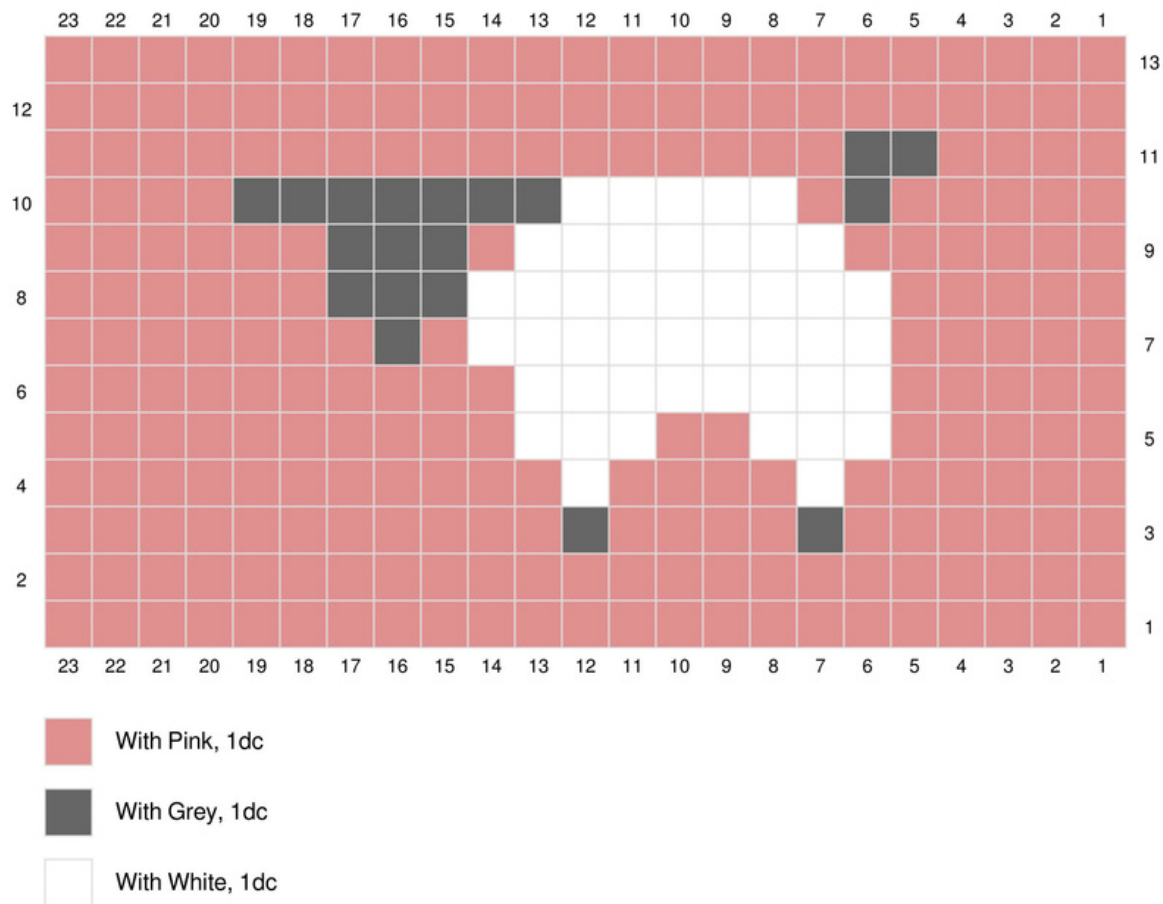
Border

With RS facing, attach White with ss to first st in top right corner, 1ch, 1dc in each st across top, 1ch, turn to work down the left side, 1dc in each row end, 1ch, 1dc in each ch across bottom, 1ch, turn to work up the right side, 1dc in each row, 1ch, ss to first st to join. [72 dc]

Fasten off and weave in ends.

Block to 20cm x 10cm.





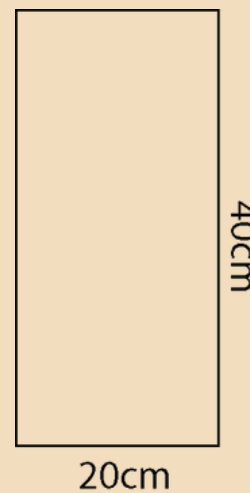
Sheep Patch Large

This patch uses the tapestry crochet method.

Make 1 Pink/Grey/White

Tension

13 sts x 15 rows worked in dc to measure 10cmx10cm using 6mm crochet hook, or hook required to meet stated tension. This patch should measure 20cmx40cm.



Using 6mm hook and Pink, ch 24.

Row 1 (RS)

1dc in second ch from hook (skipped 1ch does not count as a st), 1dc in each st across, turn. [23 dc]

Continue to follow the tapestry crochet chart for four sheep to Row 55, joining in new colours where necessary.

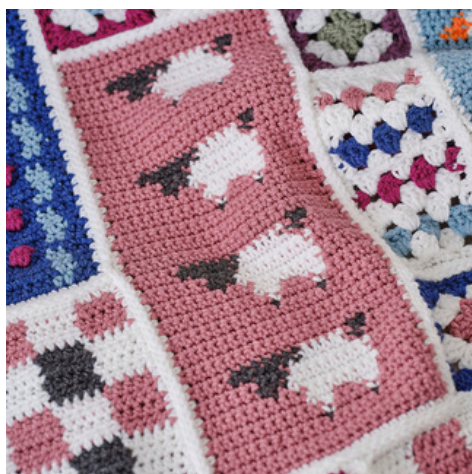
This pattern has been designed by Helen Anderson for Hobbycraft.
This pattern is for personal use only, not to be resold, or reproduced.

Border

With RS facing, attach White with ss to first st in top right corner, 1ch, 1dc in each st across top, 1ch, turn to work down the left side, 1dc in each row end, 1ch, 1dc in each ch across bottom, 1ch, turn to work up the right side, 1dc in each row, 1ch, ss to first st to join. [156 dc]

Fasten off and sew in ends.

Block to 20cm x 40cm.

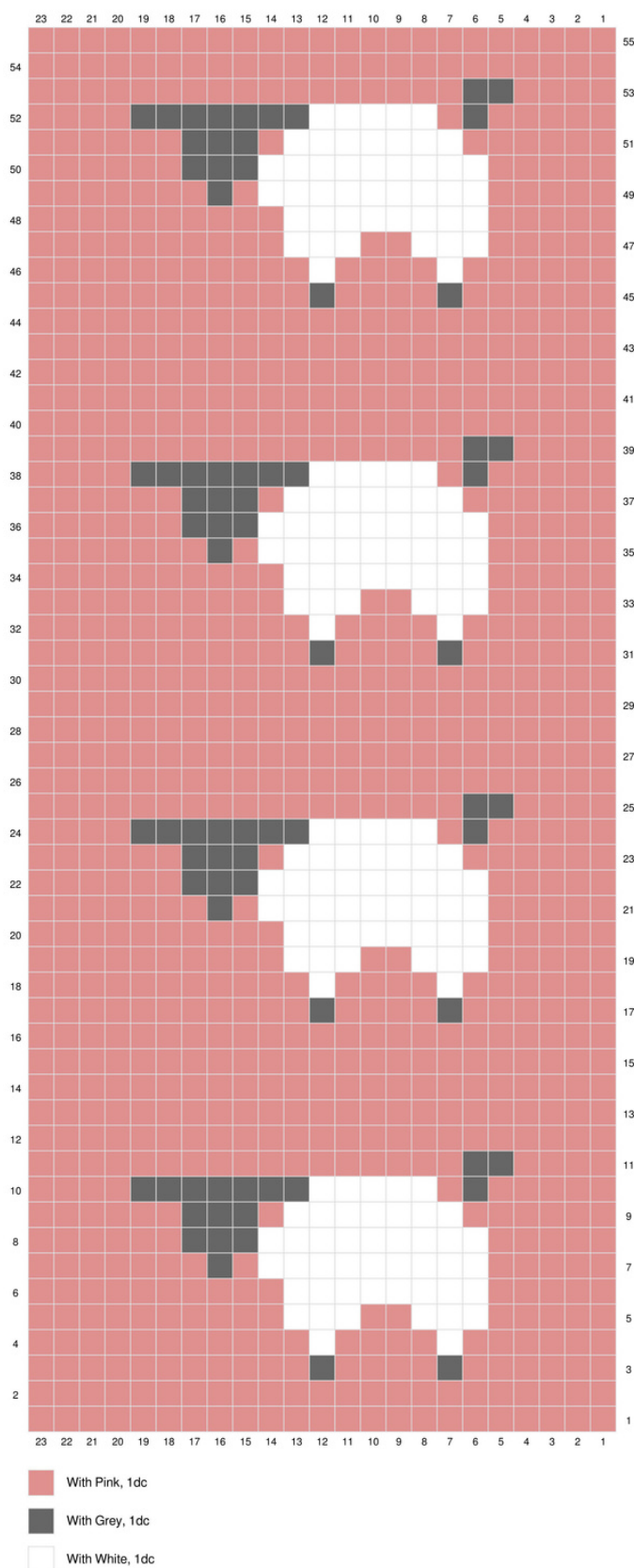


Join us over on the [Hobbycraft YouTube channel](#), where we will show you how to make this beautiful blanket!

New videos release weekly, alongside each release of the Pattern PDF.



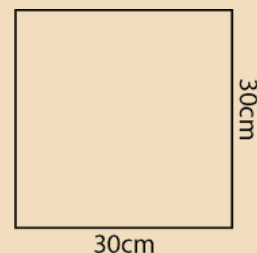
The Country Cottage CAL designed by Helen Anderson for Knitcraft Part 3



Harvest Patch

Make 1 in Magenta/Soft Green

Where more than one colour is used in a row, carry unused yarn along the top of the existing sts, trapping it with the yarn in use when making new sts.



Tension

14 sts x 6 rows worked in pattern to measure 10cmx10cm using 6mm crochet hook, or hook required to meet stated tension. This patch should measure 30cmx30cm.

Special stitches - see pattern notes

Using 6mm hook and Magenta, ch 40.

Row 1 (RS)

1dc in second ch from hook (skipped 1ch does not count as a st), 1dc in each st across, turn. [39 dc]

Row 2 (WS)

3ch (counts as 1tr throughout), 2tr, (skip 2 sts, [1puff, 2ch, 1puff] in next st, skip 2 sts, 2tr) five times, 1tr in last st, turn. [14 tr, 5 puff pairs]

Rows 3-4

3ch, (2tr, [1puff, 2ch, 1puff] in 2-ch sp) five times, 3tr, turn.

Row 5

With Magenta, 3ch, 2tr, ([with Soft Green, 1puff, 2ch, 1puff] in 2-ch sp, with Magenta, 2tr) five times, with Magenta, 1tr in last st, turn. Fasten off Soft Green.

Rows 6-13

(Rep Row 3, three times, rep Row 5, once) twice.

Rows 14-16

Rep Row 3, three times.

Row 17

1ch, 3dc, (1dc in next puff, 2dc in 2-ch sp, 1dc in next puff, 2dc) five times, 1dc in last st. [34 dc]

Fasten off and weave in all ends.

Border

With RS facing attach White with ss to first st in top right corner, 1dc in each st across the top, 1ch, turn to work down the left side, 1dc in first row end, (3dc in next row end, 2dc in next row end) eight times, 1ch, turn to work along the bottom, 4dc, (skip 1 st, 5dc) five times, skip 1 st, 4dc, 1ch, turn to work up the right side, (2dc in next row end, 3dc in next row end) eight times, 1dc in last row end, 1ch, ss to first st to join. [150 dc]

Fasten off and weave in ends.

Block to 30cm x 30cm.

